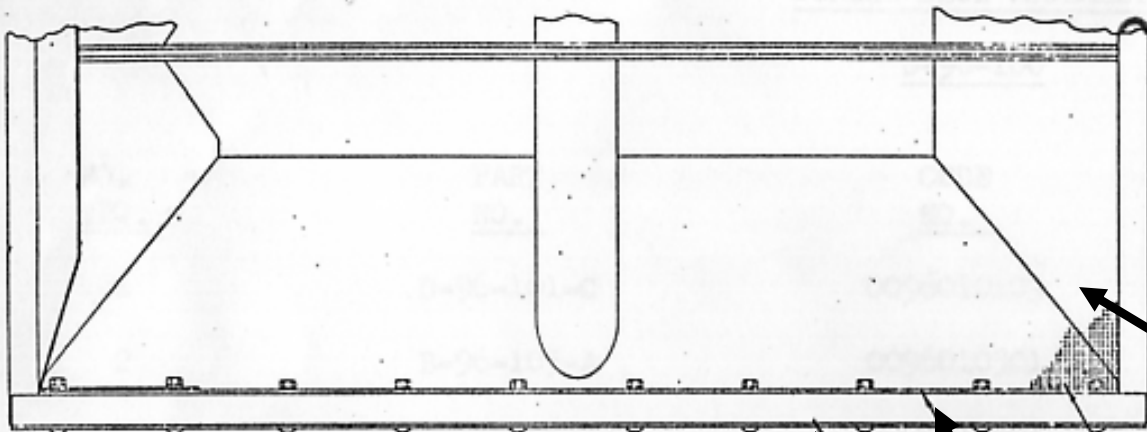


ROYER MODEL 42 POWERSCREEN

GENERAL ASSEMBLY

D-96-00

<u>NO.</u> <u>REQ.</u>	<u>PART</u> <u>NO.</u>	<u>CODE</u> <u>NO.</u>	<u>PART</u> <u>NAME</u>
1	D-96-100	0096010000	Screen Deck Assembly
1	D-96-200-C	0096020003	Conveyor Assembly
1	D-96-300	0096030000	Frame Assembly
8	1751328	1751328	Spring
2	96-340	2130066	Wheel & Tire
2	A-85-345	0085034500	Screen Lock
1	D-96-400-A	0096040001	Drive Assembly - Gas
1	D-96-500-A	0096050001	Drive Assembly - Electric



B-96-135-C SCREEN

1/2-13X23/4 CARRIAGE BOLT, NUT & LOCKWASHER

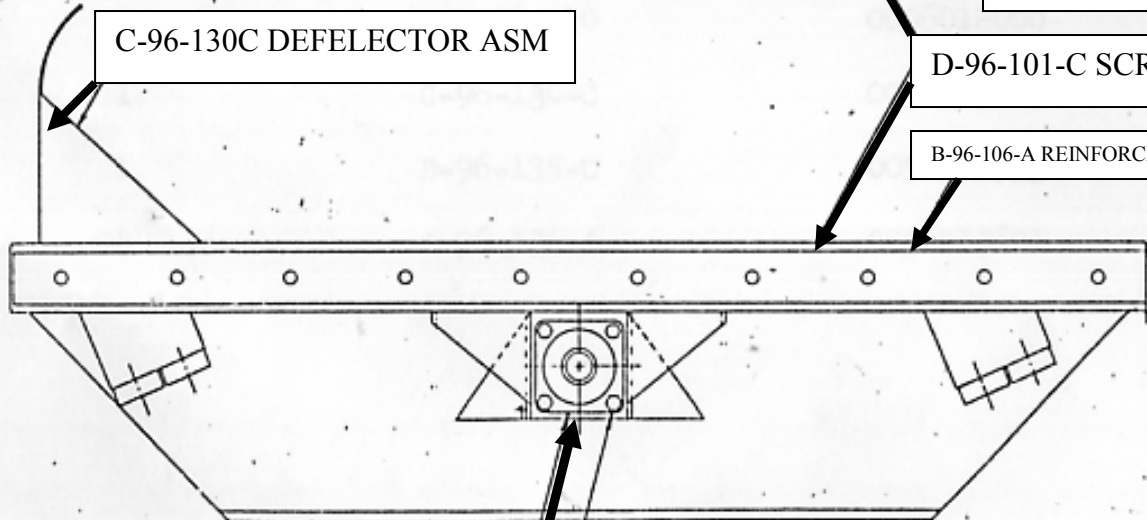
B-96-105-A RETAINER SCREEN (2 REQ)

C-96-130C DEFELECTOR ASM

D-96-101-C SCREEN DECK ASM (WELDED)

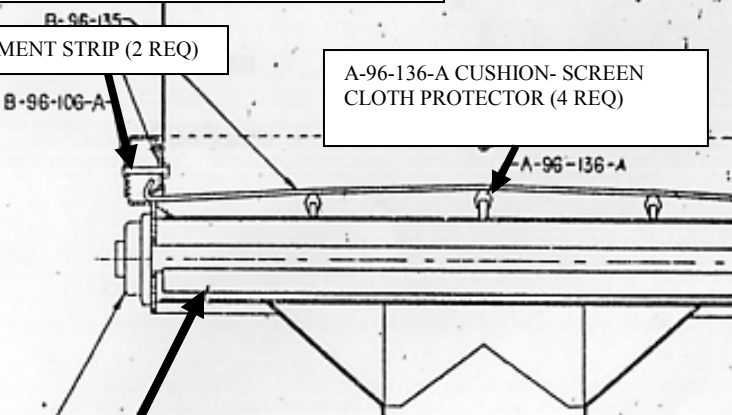
B-96-106-A REINFORCEMENT STRIP (2 REQ)

A-96-136-A CUSHION- SCREEN CLOTH PROTECTOR (4 REQ)



1/2-13x1 HEX CAPSCREW & LOCKWASHER

0220109 BEARING (2 REQ)



B-96-120 ECCENTRIC SHAFT

0220109 BEARING (REF)

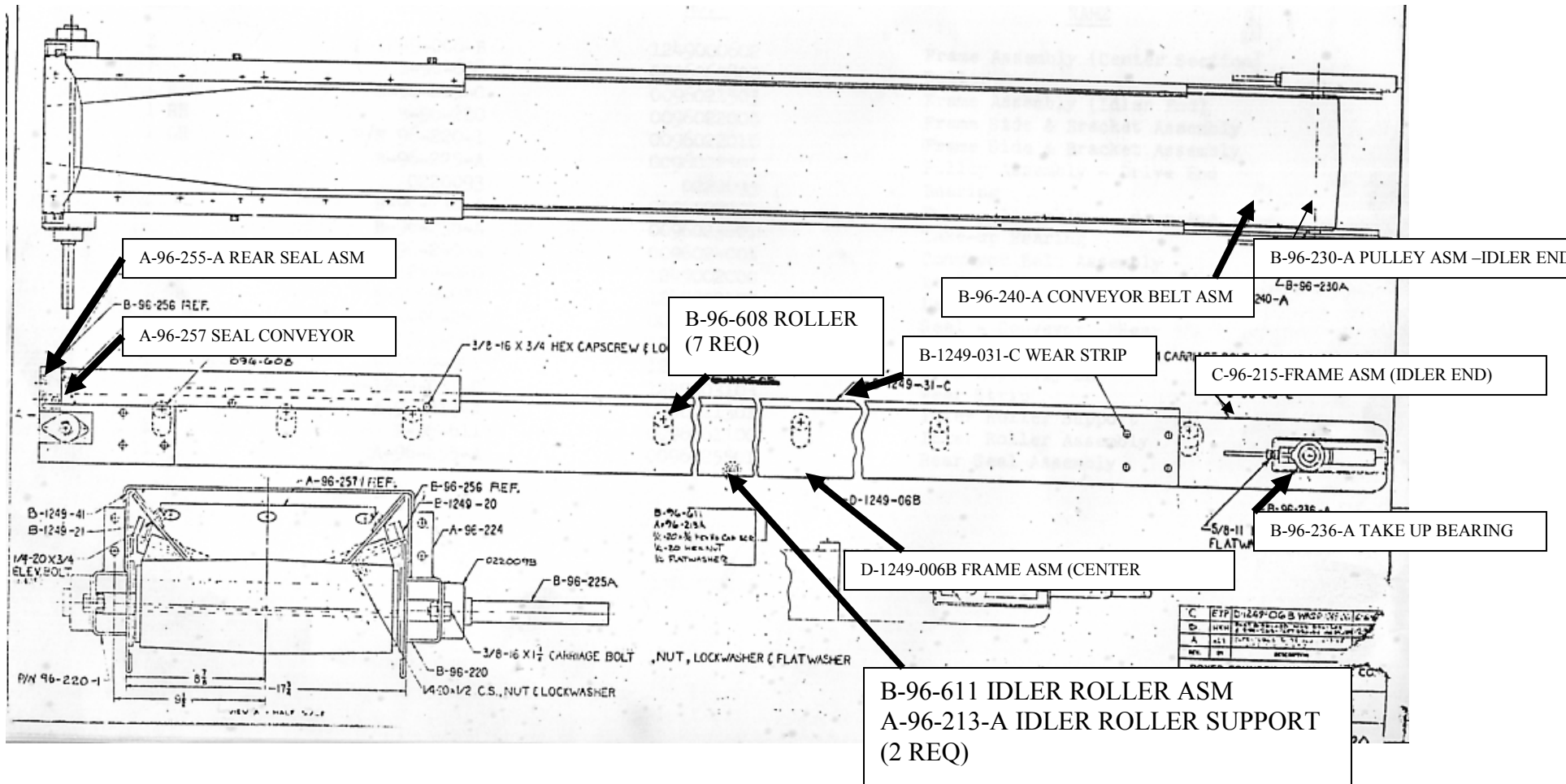
REV.	BY
	ROYER FO
TITLE	SCRE
ISSUED AT	

ROYER MODEL 42 POWERSCREEN

SCREEN DECK ASSEMBLY

D-96-100

<u>NO.</u> <u>REQ.</u>	<u>PART</u> <u>NO.</u>	<u>CODE</u> <u>NO.</u>	<u>PART</u> <u>NAME</u>
1	D-96-101-C	0096010103	Screen Deck Assembly (Welded)
2	B-96-105-A	0096010501	Retainer - Screen
2	B-96-106-A	0096010601	Reinforcing Strip
2	0220109	0220109	Bearing
1	B-96-120	0096012000	Eccentric Shaft
1	C-96-130-C	0096013003	Deflector Assembly
1	B-96-135-C	0096013533	Screen
4	A-96-136-A	0096013601	Cushion - Screen Cloth Protector



B-1249-041 SEAL ASM LH  
B-1294-040 SEAL ASM RH

B1249-21 LEAD IN STRIP LH

1/4-20 X 3/4  
ELEV. BOLT

P/N 96-220-1 FRAME SIDE  
& BRACKET ASM LH

B-96-225-A PULLEY ASM  
DRIVE END

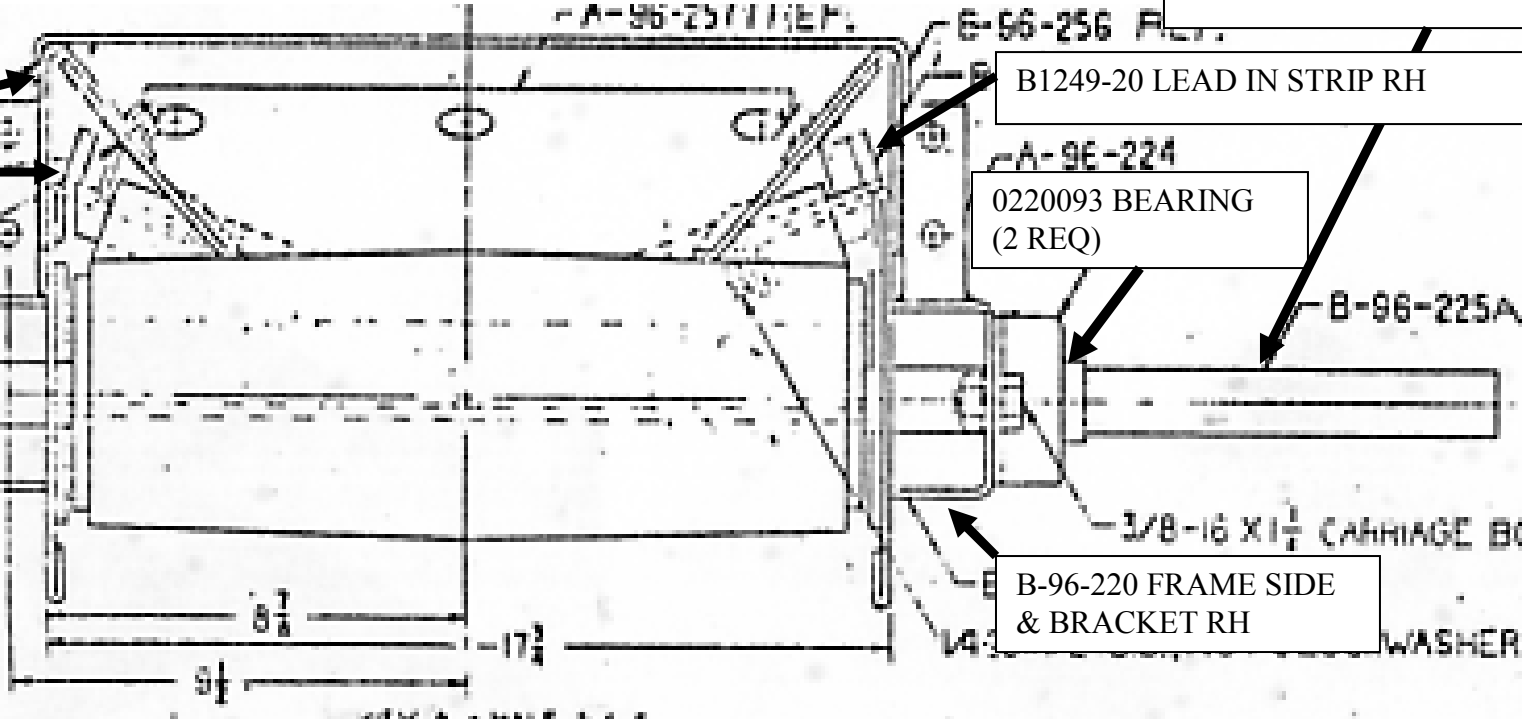
B1249-20 LEAD IN STRIP RH

0220093 BEARING  
(2 REQ)

B-96-220 FRAME SIDE  
& BRACKET RH

3/8-16 X 1 1/2 CARRIAGE BOLT

WASHER

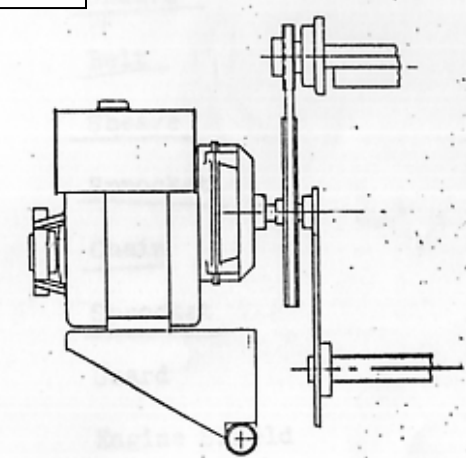
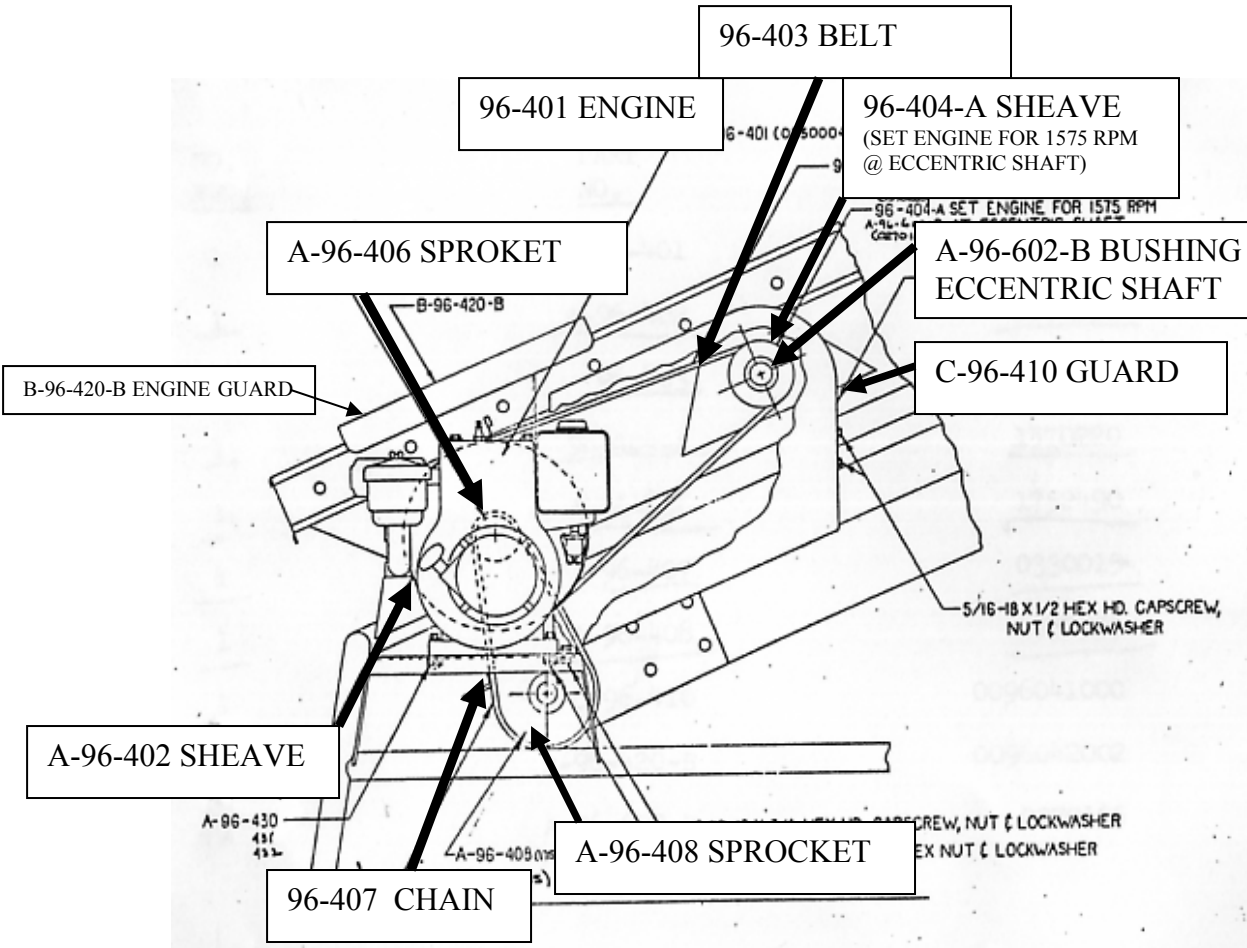


ROYER MODEL 42 POWERSCREEN

CONVEYOR ASSEMBLY

D-96-200-C

<u>NO.</u> <u>REQ.</u>	<u>PART</u> <u>NO.</u>	<u>CODE</u> <u>NO.</u>	<u>PART</u> <u>NAME</u>
1	D-1249-006-B	1249000602	Frame Assembly (Center Section)
7	B-96-608	0096060800	Roller
1	C-96-215-C	0096021503	Frame Assembly (Idler End)
1 RH	B-96-220	0096022000	Frame Side & Bracket Assembly
1 LH	P/N 96-220-1	0096022010	Frame Side & Bracket Assembly
1	B-96-225-A	0096022501	Pulley Assembly - Drive End
2	0220093	0220093	Bearing
1	B-96-230-A	0096023001	Pulley Assembly - Idler End
2	B-96-236-A	0096023601	Take-up Bearing
1	B-96-240-A	0096024001	Conveyor Belt Assembly
1 RH	B-1249-020	1249002000	Lead In Strip
1 LH	B-1249-021	1249002100	Lead In Strip
1	A-96-257	0096025700	Seal - Conveyor - Rear
1	B-1249-040	1249004000	Seal Assembly RH
1	B-1249-041	1249004100	Seal Assembly LH
2	B-1249-031-C	1249003103	Wear Strip
2	A-96-213-A	0096021301	Idler Roller Support
1	B-96-611	0096061100	Idler Roller Assembly
1	A-96-255-A	0096025501	Rear Seal Assembly



A	REV	REVISION ONLY REVISION	DATE	BY
<b>ROYER FOUNDRY AND MACHINE CO</b> KINGSTON, PA.				
TITLE: DRIVE ASSEMBLY - GAS MODEL 42 POWER SCREEN				
DRAWN BY	SCALE 1:1	PART OR SUB NO.	U. 96.400	

ROYER MODEL 42 POWERSCREEN

DRIVE ASSEMBLY - GAS

D-96-400-A

<u>NO. REQ.</u>	<u>PART NO.</u>	<u>CODE NO.</u>	<u>PART NAME</u>
1	96-401	0550004	Engine
<u>1</u>	<u>A-96-402</u>	<u>1570195</u>	<u>Sheave</u>
<u>1</u>	<u>96-403</u>	<u>0221210</u>	<u>Belt</u>
<u>1</u>	<u>96-404-A</u>	<u>1570220</u>	<u>Sheave</u>
<u>1</u>	<u>A-96-406</u>	<u>1752490</u>	<u>Sprocket</u>
<u>1</u>	<u>96-407</u>	<u>0330015</u>	<u>Chain</u>
<u>1</u>	<u>A-96-408</u>	<u>1752555</u>	<u>Sprocket</u>
1	C-96-410	0096041000	Guard
1	B-96-420-B	0096042002	Engine Shield
1	A-96-602-B	0270105	Bushing, Eccentric